



VERTEX
HI-FAB ENGINEERING

CORPORATE PROFILE

OFFICE & WORK ADDRESS

Plot No.6 & II, Shreeji Industrial
Park,Nr. Shreenathji Industrial
Estate,Kuha-Bakrol Road, Bakrol,
Ahmedabad– 382430,Gujarat, India.

Contact No.

+91 99987 38363, +91 98254 53287

Email:

info@vertexhifab.com

www.vertexhifab.com

OUR VISION

- ▼ To be a high class solution provider by executing all projects with innovative approaches, having minimum ecological impact and providing best value for customer's investment by providing optimum solution.



- ▼ To exceed our customers' expectations in quality, delivery, and cost through continuous improvement and customer interaction.

OUR MISSION

- ▼ To provide best, suitable and effective product to customer in modern way.
- ▼ To serve the Government, India MNC and International industries.
- ▼ To utilized the service with International suppliers to achieve effective product requirements.



JOURNEY

- ▼ Vertex Hi-Fab Engineering was established in 2021 with basic idea to serve various industries in the area of Oil & Gas, Petrochemicals, Chemical, Refinery, Power, Pharmaceutical and Dairy industries.
- ▼ Vertex Hi-Fab Engineering is an ISO 9001:2015 certified company and engaged in design, manufacturing and supply of process equipments and parts to industries as per client requirement and code / standard norms



SPECTRUM OF PRODUCTS

- ▼ Pressure Vessels, Tanks, Volume Bottles.
- ▼ Heat Exchanger, Coolers, Air Cooled Heat Exchanger.
- ▼ Fabricated Valve body
- ▼ Headers and Piping.
- ▼ Structure Items (Base frame and supporting structure of Machinery, Pump, Boiler, Turbine) Structure of ACHE, Structure for process plants & Saddle supports etc.
- ▼ Material handling equipments (Cage pallet, Trolley)
- ▼ Internal parts of equipments.
- ▼ Machined Items (Heavy Flanges, Nozzle Assembly, Testing Fixture etc.)
- ▼ Fabricated Items (As per customer requirement)
- ▼ Repairing of Process equipment, Assembly and Parts.

ORDER EXECUTION OF PRODUCTS

- ▼ At Vertex Hi-Fab Engineering any equipment order starts with designing the systems and detailed planning to execute the whole project with predetermined perfection.
- ▼ Our design agency ensures this where most advanced design and engineering techniques & software are used to suit any specific requirements.
- ▼ These customized designs are materialized with the aid of sophisticated manufacturing facility coupled with dynamic and experienced production team to produce the widest product range.
- ▼ We make sure to adopt quality control measures at each stage to adhere to the world's best standards.
- ▼ We give our clients an attractive routine maintenance and service package to enable them to get the best output of the erected plant, consistently.
- ▼ We aim at achievement of excellence through the ideal combination of our expertise in manufacturing equipment and system design.

CODES & STANDARDS

Pressure Vessels / Tanks

- A.S.M.E. : Sec II (Part A, B, C, D), Sec.V, Sec.VIII Div.I, Sec. IX.
- American Petroleum Institute :API 650 (Welded Steel Tanks for Oil Storage)

Heat Exchangers

- Tubular Exchanger Manufacturers Association (TEMA)
- American Petroleum Institute :API 660 (Shell & Tube Heat Exchangers for General Refinery Services) and API 661 (Air Cooled Heat Exchangers).

PARTNERS (Key Persons) of VERTEX HI-FAB ENGINEERING.

Name of Partner	Exp. in Year	Previous Employment	Designation in previous employment
Rohit Sadariya	18+ Years	<ul style="list-style-type: none"> -Patels Airtemp (India) Ltd, Rakanpur, Dist: G'nagar. -Hindustan Dorr-Oliver Ltd, Vatva, Ahmedabad. -International Inspection Services Pvt. Ltd. Ahmedabad (Head Office: Hyderabad) 	Sr. Engineer (QA/QC), Lead Auditor. Asst. Manager – QA/QC. Gujarat Head.
Chetan Patel	19+ Years	<ul style="list-style-type: none"> -Patels Airtemp (India) Ltd, Rakanpur, Dist:G'nagar. -Hindustan Dorr-Oliver Ltd, Vatva, Ahmedabad. -Shree Ram Engineering, Kathwada, Ahmedabad 	Sr. Engineer - Production Asst. Manager – Production Partner

MANUFACTURING PLANT DETAILS: UNIT - I

I	Total Area	775 square meters with RCC Floor
2	Covered Area with Air ventilation	600 Sq. Meter Built Area with strong RCC Floor
3	Office Area	150 sq. Meter.
4	Stores	100 sq Meter.
5	Shop Floor (Shed) size	<p>30 Meter Long X 17 Meter Wide X 8.5 Meter Working Height.</p> <p>10 Tons EOT Crane with 7.0 Mtr. Clear Hook Height – 1 No</p>

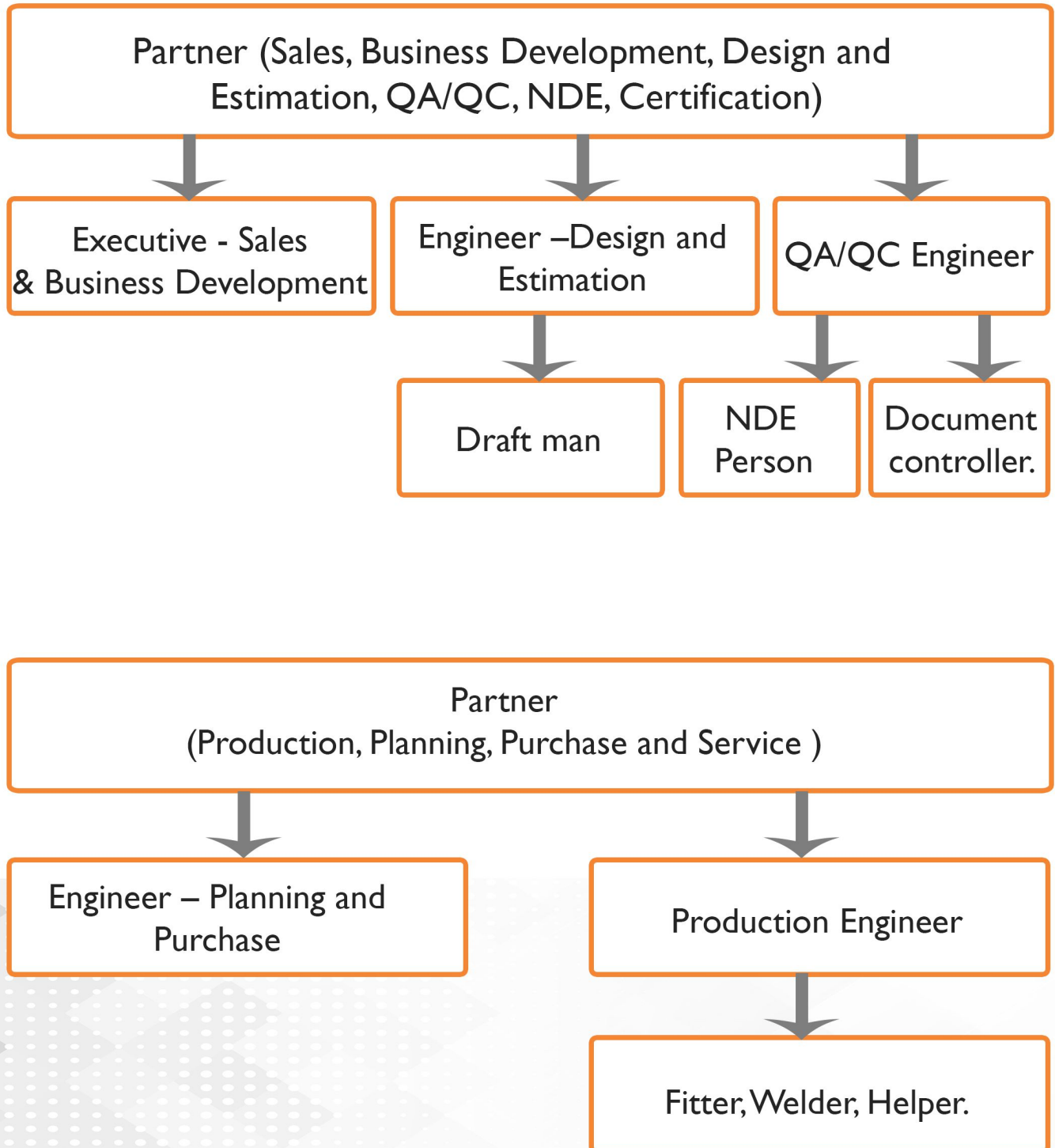
MANUFACTURING PLANT DETAILS: UNIT -2

I	Total Area	650 square meters with RCC Floor
2	Covered Area with Air ventilation	550 Sq. Meter Built Area with strong RCC Floor
3	Office Area	100 sq. Meter
4	Stores	150 sq Meter
5	Shop Floor (Shed) size	<p>25 Meter Long X 16 Meter Wide X 8.5 Meter Working Height.</p> <p>5 Tons EOT Crane with 7.0 Mtr. Clear Hook Height – 1 No.</p>

LIST OF MACHINERY

- SAW welding machine – 01 No's.
- MIG welding Machine – 03 No's.
- Arc Welding Machine – 03 No's.
- TIG Welding Machine – 01 No.
- Radial Drill Machine – 01 No.
- Column Drill Machine – 01 No.
- PUG Cutting machine – 01 No.
- Cut off machines – 03 No's.
- Grinding Machines – 08 No's.

ORGANIZATION CHART



LIST OF CLIENTS

GMM Pfaudler
Defining the standard

Pf

GMM Pfaudler Limited, Ahmedabad



Mazda Ltd, Ahmedabad

ARVIND

Arvind Limited, Khatraj, Dist: Gandhinagar



SKAPS Industries India Pvt. Ltd. Mundra



Fintelius Engineering Pvt. Ltd, Ahmedabad



Omkar Engineers, Ahmedabad



Chem Process Systems Pvt. Ltd, Ahmedabad

MANUFACTURING PLANT VISUALS



UNIT-1



UNIT-2



**BASE STRUCTURE OF AIR
COOLED HEAT EXCHANGER**



PRESSURE VESSEL

MANUFACTURING PLANT VISUALS



STORAGE TANK



CAGE PALLETS

STRUCTURE OF PROCESS PLANT (MATERIAL-SS 304)



THANK YOU